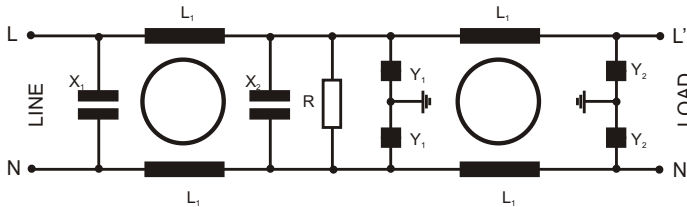


EMI FILTERS

EMI FILTERS AND CHOKING-COILS

Electrical diagram



Capacitance "X" - X2 class

Capacitance "Y" - Y2 class

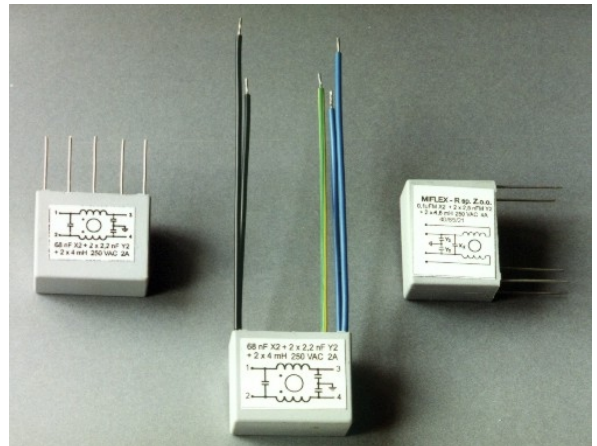
Nominal voltage:

250V_{AC}

Electric strength test (2s):

1700V_{DC} - X class

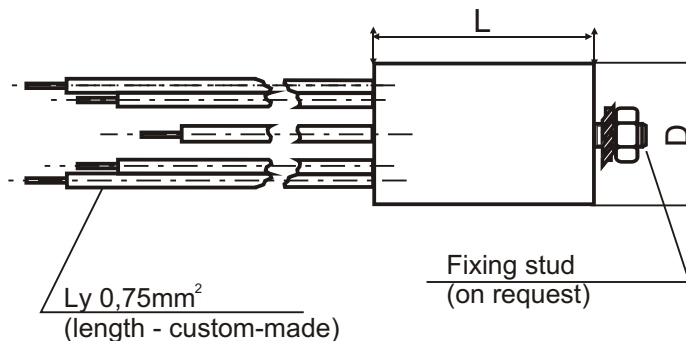
3000V_{DC} - Y class



Note: Special dimensions, parameters and cases available upon request
in the range of 0,5÷2A

| T e | Current | Inductance | | Ca acitance | | Ca acitance Y | | Resistance | Case |
|--------------|---------|------------|---------|-------------|---------|---------------|---------|------------|------|
| | Is [A] | L1 [mH] | L2 [mH] | X1 [µF] | X2 [µF] | Y1 [nF] | Y2 [nF] | R [MW] | |
| FICS1 | 4 | 2x10 | 2x10 | 0,33 | 0,33 | 3,3 | 3,3 | 1 | 1A |
| FIC1 | 4 | 2x2,5 | | - | 0,1 | 2,5 | - | - | 2A |
| FIC2 | 2 | 2x4 | | 0,068 | - | 2,2 | - | - | 1T |
| FIC2 | 2 | 2x4 | | 0,068 | - | 2,2 | - | - | 2T |
| FIC2 | 2 | 2x4 | | 0,068 | - | 2,2 | - | - | 3T |

Aluminium case - stranded Cu-wire



| Type | D | L |
|------|------|----|
| 1A | 35 | 75 |
| 2A | 22,5 | 53 |



MIFLEX-RELAX Sp. z o.o.

99-300 KUTNO UL. GRUNWALDZKA 3

Tel. (0-24) 355 13 34

Fax. (0-24) 253 64 67

<http://www.miflexrelax.com.pl>

E-mail: miflexrelax@home.pl

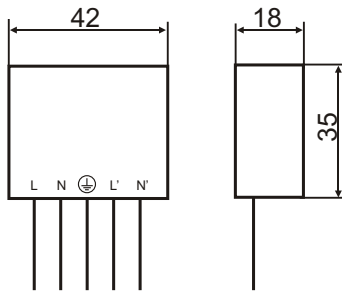
EMI FILTERS

EMI FILTERS AND CHOKING-COILS

Page 2

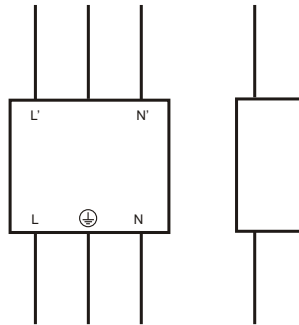
Plastic case

TYPE 1T



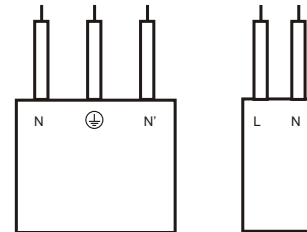
For PCB

TYPE 2T



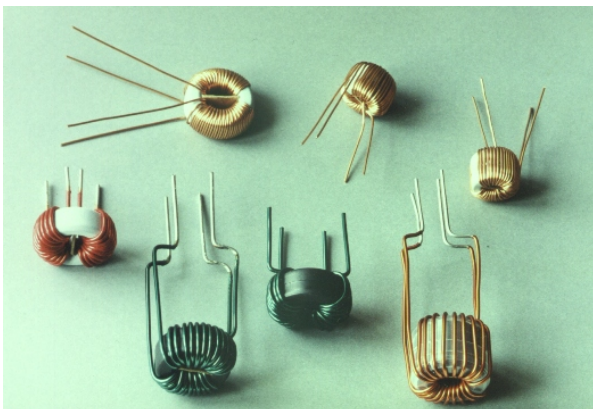
Two-sided Cu-wire

TYPE 3T

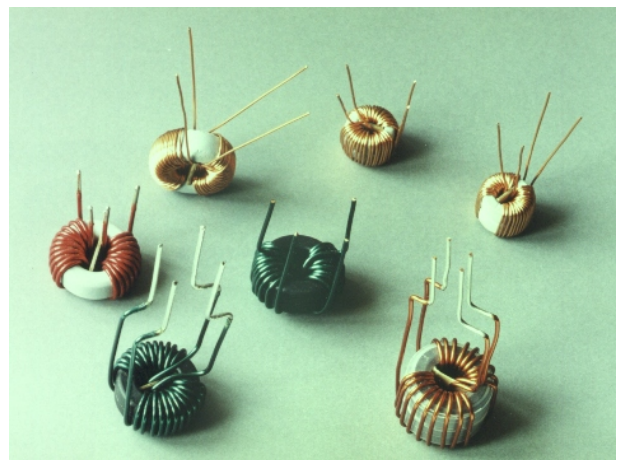


Stranded Cu-wire
Ly 0,5mm²

Choking-coils on the ferrite cores



Designed to use in one and multi phase circuits.
Inductance: 0,33÷10mH
Current: 0,5÷16A.



MIFLEX-RELAX Sp. z o.o.

99-300 KUTNO UL. GRUNWALDZKA 3

Tel. (0-24) 355 13 34

Fax. (0-24) 253 64 67

<http://www.miflexrelax.com.pl>

E-mail: miflexrelax@home.pl

Revision date: 2002.07.24